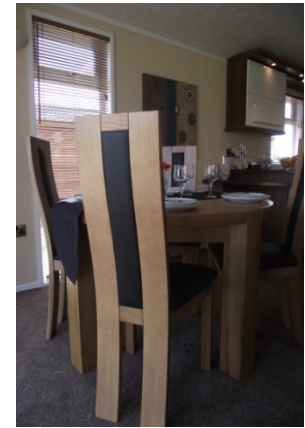


The Liddesdale



The Liddesdale is the latest exciting addition to the Reiver range. Combining designer flair with true functionality the stunning Liddesdale is truly in a class of its own.

The beautiful high gloss kitchen sets the tone from the outset. The warmth and style of the walnut is given a contemporary flavour with the addition of the contrasting white doors and tile work. Modern appliances in stainless steel compliment the area with the wrap-around breakfast bar adding the finishing touch!

The utility room continues the designer theme with complimentary cupboards for housing those everyday essentials.

The lounge features a stunning glass gable that illuminates the living area and shows off beautifully the feature wall with cream fire and contrasting walnut decorative panel.

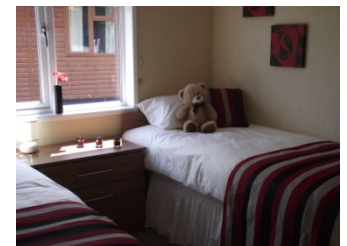
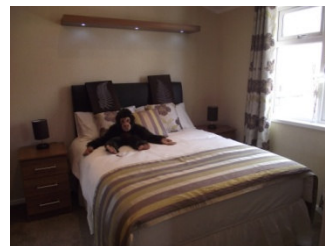
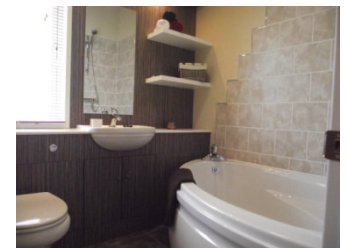
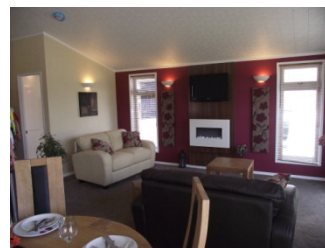
The bathroom and en-suite both feature cabinets in zebrano for a truly exotic flavour. The bathroom has a corner bath whilst the en-suite has fitted shower.

The master bedroom with double bed features two build-in wardrobes leading to the en-suite. The second bedroom features two single beds and wardrobes.

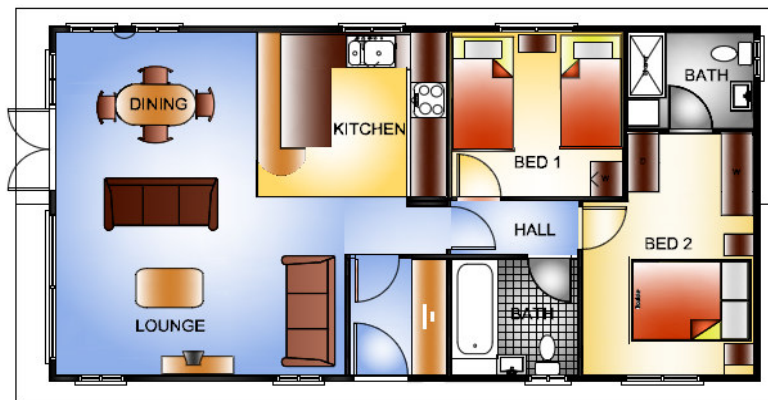


The Liddesdale, beautiful, practical and very desirable.

TV, DVD player, all ornaments and pictures are for display only.



The Liddesdale



At Reiver we reserve the right to change any material, fitting, etc. shown in this brochure at any time without prior notice. All Reiver lodges are built to relevant British Standards and codes as required by the National Caravan Council certification scheme.

To use a Reiver Home, it will need to be correctly sited, have steps or other means of entry and to be connected to appropriate services (gas supply, mains electricity to suit the power off take, mains water to suite the appliances and a waste water/sewage outlet).

STANDARD

INTERIOR

- Vaulted ceiling to the lounge
- Gas combi central heating with contemporary radiators
- Underlay fitted to all carpets
- Smoke alarm and carbon monoxide detectors
- Contrasting statement wall to lounge and kitchen

LOUNGE

- Faux leather Suite
- Scatter cushions
- Electric fire
- Coffee table and side table
- Venetian blinds and fully lined curtains

KITCHEN

- Integrated 600 stainless steel oven
- Separate gas 4 ring burner hob
- Stainless steel extractor fan
- Microwave oven
- 50/50 fridge freezer
- Dishwasher
- Venetian blind

DINING AREA

- Dining table and chairs

MAIN BEDROOM

- 4'6" divan bed, duvet and pillows
- Bed runner
- Fitted units
- Lined curtains

En-Suite

- Tiled shower enclosure
- Wash hand basin
- WC
- Fitted unit and mirror
- Floor lighting
- Venetian blind

TWIN BEDROOM

- 2 x 3" Divan beds, duvet and pillows
- Bed runner
- Fitted units
- Lined curtains

BATHROOM

- Bath with over head shower
- Wash hand basin
- WC
- Fitted units and mirror
- Floor lighting
- Venetian blinds