

The Sprint



The 40 x 14 Sprint represents the ultimate in holiday home luxury.

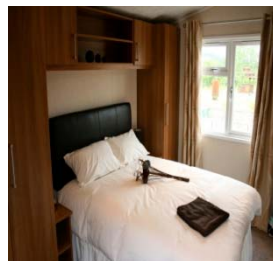
The Sprint provides the perfect base for either a short weekend break or that long-awaited summer holiday.

Beginning in the lounge the beautiful glass gable fills the interior with warmth and light, so much so that the Sprint appears much bigger on the inside!

The contemporary, open plan kitchen should satisfy the keenest holiday chef. The oven, hob, extractor hood and microwave are finished in stunning stainless steel with the fridge freezer and dishwasher discreetly tucked away for a truly designer look.

The bathroom and en-suite would grace many a luxury home with their elegant white porcelain, ceramic tiles and one-piece shower enclosure.

The bedrooms feature fitted units with wood effect finish, providing a delightful retreat from the days' activities.



From start to finish the sprint is ahead of the rest in affordable, luxury living.

TV, DVD player, all ornaments and pictures are for display only.

Unit D Kingmoor Park, Rockcliffe
Carlisle, Cumbria
CA6 4RW

www.reiverlodges.co.uk
Telephone: 01228 672227

The Sprint



SPRINT FLOOR PLAN 40X14



At Reiver we reserve the right to change any material, fitting, etc., shown in this brochure at any time without prior notice. All Reiver lodges are built to relevant British Standards and codes as required by the National Caravan Council certification scheme.

To use a Reiver Home, it will need to be correctly sited, have steps or other means of entry and to be connected to appropriate services (gas supply, mains electricity to suit the power off take, mains water to suit the appliances and a waste water/sewage outlet).

STANDARD

INTERIOR

- Decorative boarding
- Gas Combi central heating with contemporary radiators
- Underlay fitted to all carpets
- Smoke alarm and carbon monoxide detectors

LOUNGE

- Faux leather suite
- Scatter cushions
- Electric fire
- Coffee table
- Lined curtains

KITCHEN

- Integrated 600 stainless steel oven
- Separate gas 4 ring burner hob
- Stainless steel extractor fan
- Microwave oven
- 50/50 fridge freezer
- Dishwasher
- Venetian blind

DINING AREA

- Dining Table and chairs

MAIN BEDROOM

- 4'6" divan bed, duvet and pillows
- Fitted units
- Lined curtains

En-Suite

- Tiled shower enclosure
- Wash hand basin
- WC
- Fitted unit and mirror
- Venetian blind

TWIN BEDROOM

- 2 x 3" divan beds, duvet and pillows
- Fitted Units
- Lined curtains

BATHROOM

- Bath with over head shower
- Wash hand basin
- WC
- Fitted units and mirror
- Venetian blinds

- Built to EN1647 standard